



## SV16-22 兩通常閉式錐閥 2-Way, Normally Closed ,Poppet

### 描述 DESCRIPTION

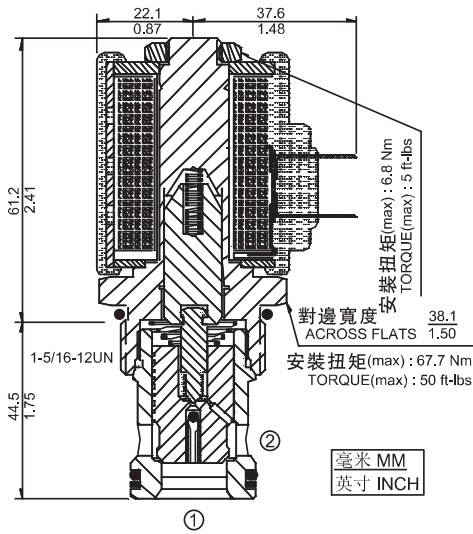
電磁驅動、2 通常閉、導控座閥式、液壓螺紋插裝閥，用作低泄漏截止和負載保持應用。

A solenoid-operated, 2-way, normally closed, poppet-type, screw-in hydraulic cartridge valve, designed for low leakage blocking and load holding applications.

### 工作原理 OPERATION

斷電時，SV16-22 用作單向閥，允許油液從①流向②，同時截止油液從②流向①。通電后，閥芯提升，從而打開從②流向①的油液通道。此模式允許雙向流動。

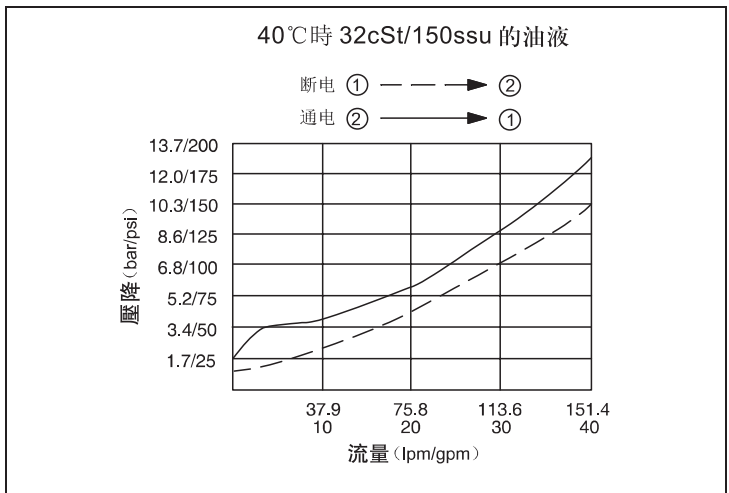
When de-energized, the SV16-22 acts as a check valve, allowing flow from ① to ②, while blocking flow from ② to ①. When energized, the poppet lifts to open the ② to ① flow path. In this mode, bidirectional flow is allowed.



### 特性 SPECIFICATIONS

|  |   |
|--|---|
| 符號<br>SYMBOL                               |   |
| 工作壓力<br>PRESSURE                           | 207 bar<br>3000 psi   |
| 流量<br>FLOW                                 | 132 L/min<br>35 gpm   |
| 內漏<br>LEAKAGE                              | ≤ 0.15 ml/min (3 drops/min)<br>at 207 bar (3000 psi)                                      |
| 密封材料/溫度範圍<br>SEAL MATERIAL/<br>TEMPERATURE | 丁腈橡膠 -30°C ~ +100°C<br>BUNA-N -20°F ~ +210°F<br>氟橡膠 -20°C ~ +150°C<br>VITON -4°F ~ +330°F |
| 線圈額定負載<br>COIL DUTY<br>RATING              | 可在85%至115%的額定電壓範圍內連續工作<br>CONTINUOUS FROM 85% TO 115% OF NOMINAL VOLTAGE                  |
| 過濾<br>FILTRATION                           | ≤ 25 MICRONS  |
| 介質<br>FLUID                                | 礦物油或具有潤滑作用的合成油<br>MINERAL OIL OR SYNTHETIC FLUID WITH LUBRICANT PROPERTIES                |
| 粘度<br>VISCOSITY                            | 10.8~420 cSt<br>50~2000 ssu   |
| 閥孔<br>CAVITY                               | VC16-2  |

### 性能 (只針對插件) TYPICAL PERFORMANCE (Cartridge only)



### 訂貨型號 HOW TO ORDER

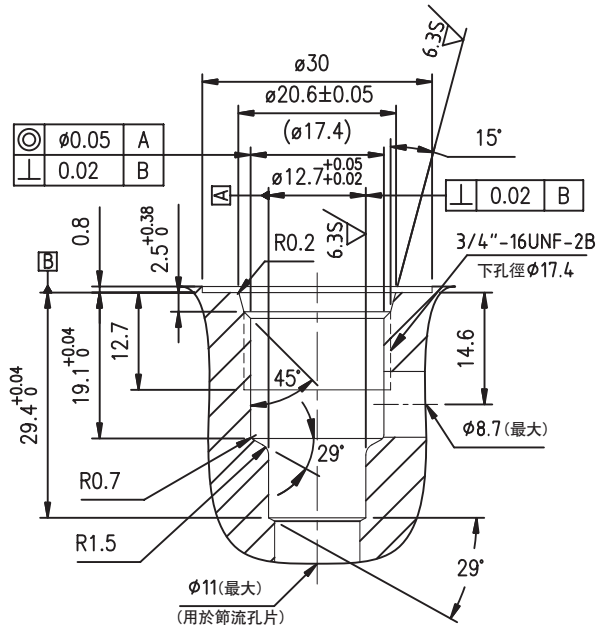
|                            |                            |                          |                                  |
|----------------------------|----------------------------|--------------------------|----------------------------------|
| 選項 Option                  | 無 None                     | 線圈終端<br>Coil Termination | 無 None                           |
| S: 150µ 過濾網<br>150µ Screen | M: 應急手控<br>Manual Override | 線圈電壓<br>Coil Voltage     | 0: 無線圈                           |
| 密封材料<br>Seal Material      | N: 丁腈橡膠 Buna-N             | 12: DC 12V               | 24: DC 24V                       |
| V: 氟橡膠 Viton               | 115: AC 115V               | 230: AC 230V             |                                  |
|                            |                            |                          | DR: 導線 Leadwires                 |
|                            |                            |                          | AG: DIN43650                     |
|                            |                            |                          | AP: 1/2 英寸導線管<br>1/2 in. Conduit |



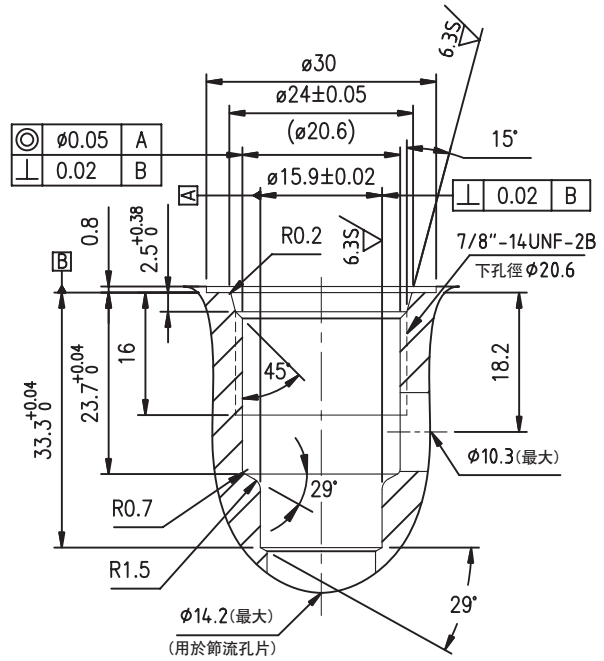
兩通插裝閥閥孔 2-Way Cartridge Cavities

單位: mm

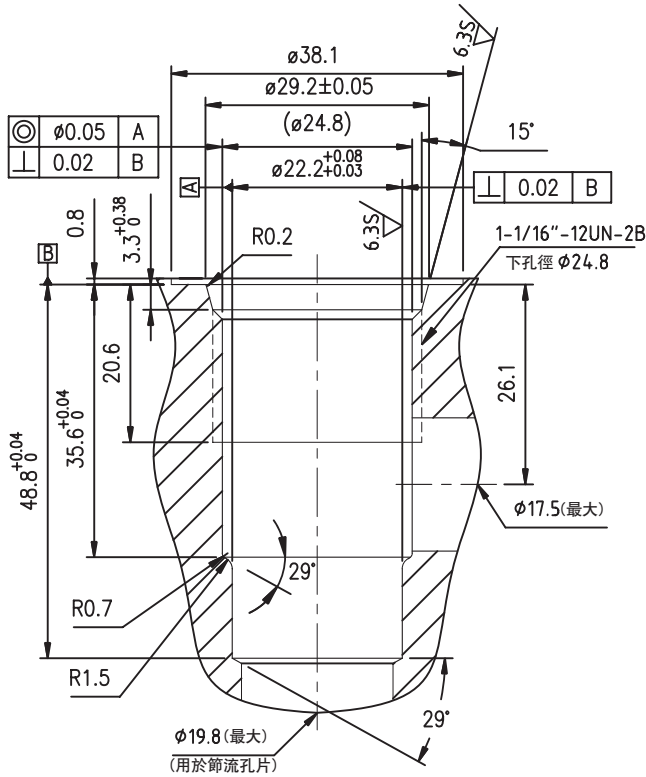
VC08-2



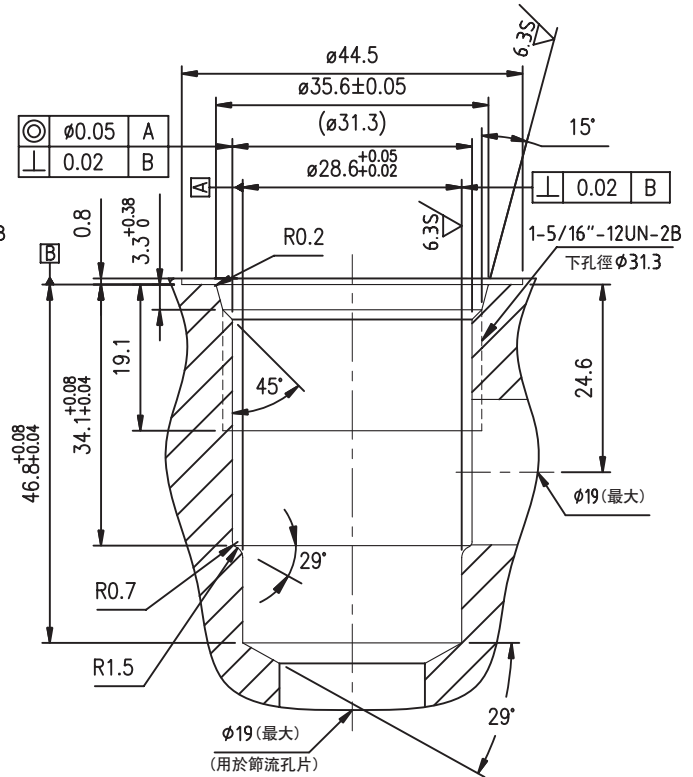
VC10-2



VC12-2



VC16-2



A  
B  
C  
D  
E  
F  
G  
H  
I  
J  
K

插裝閥閥孔